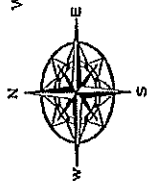


PLAN 1

www.invarion.com



Date: May 6, 2016 Author: Natalie May - 604-396-9164 Universal Flagging: 170-8061 Loughheed Hwy Burnaby, BC V5A 1W9
 Office: 604-444-3732 Dwg#: 001

Comments:

Golder Associates
 Mark Newman
 804-353-6464

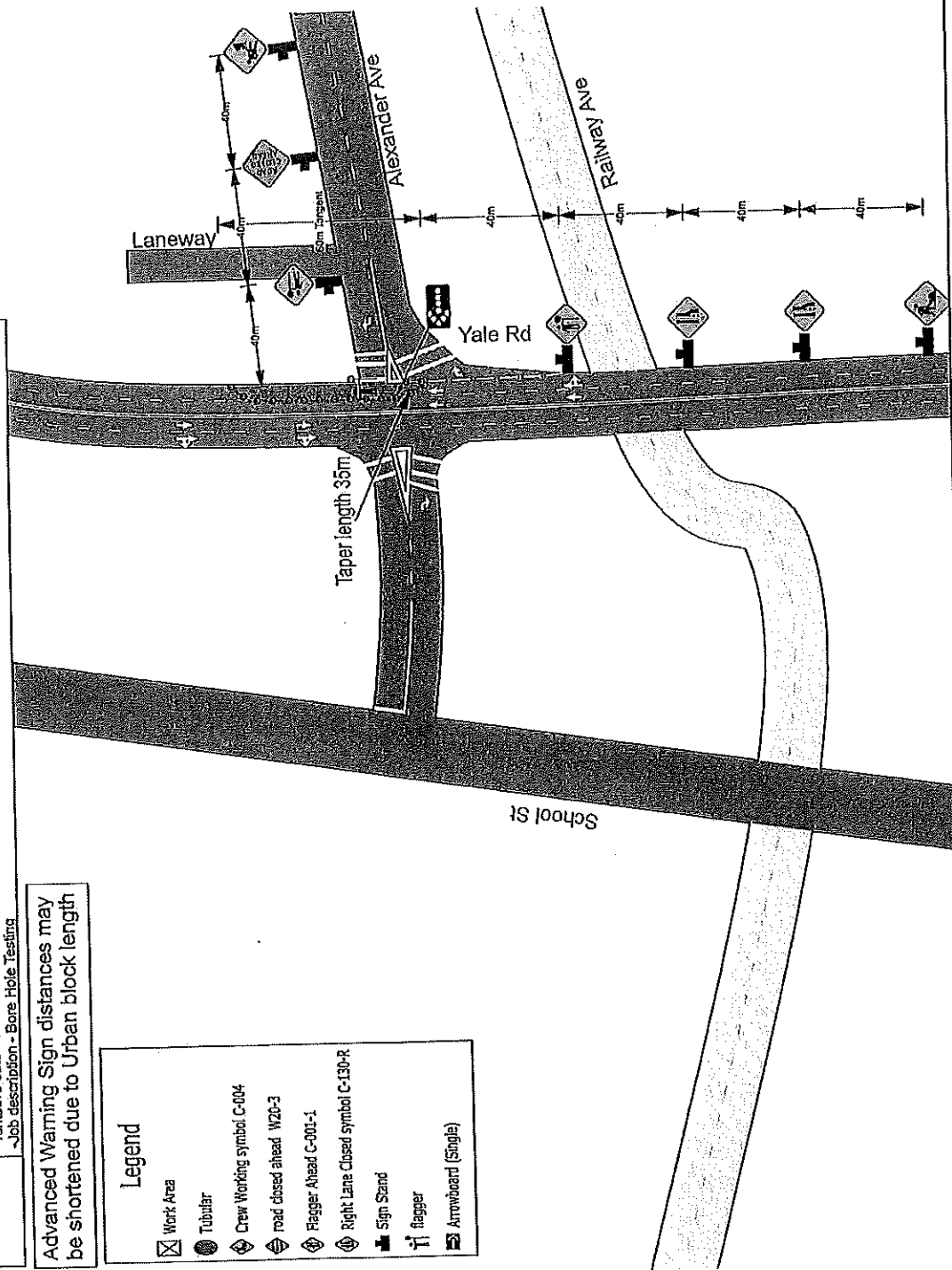
City of Chilliwack
 ~Job location - Yale Rd & Alexander Ave
 ~Closure description - Curb Lane Closure & Road Closed
 ~Tentative date - TBA
 ~Job description - Bore Hole Testing



Advanced Warning Sign distances may be shortened due to Urban block length

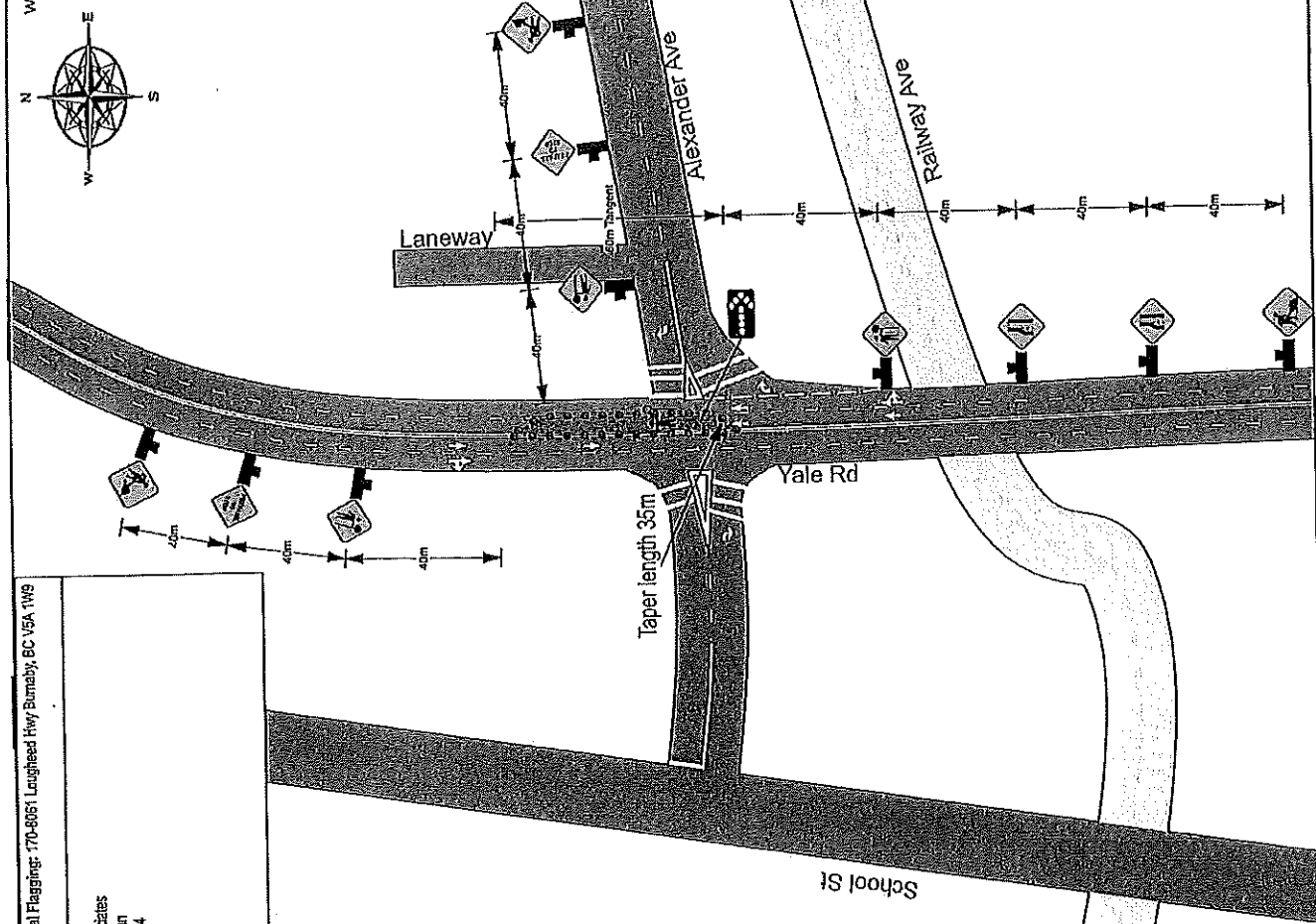
Legend

- Work Area
- Tubular
- Crew Working symbol C-004
- road closed ahead W20-3
- Flagger Ahead C-000-1
- Right Lane Closed symbol C-130-R
- Sign Stand
- flagger
- Arrowboard (Single)



PLAN 2.

www.imvarion.com



Date: May 6, 2016 Author: Nohale May - 604-956-9164 Universal Flagging - 170-8061 Lougheed Hwy Burnaby, BC V5A 1W9
 Office: 604-444-3732 Dwg#: 001

Golden Associates
 Mark Newman
 604-353-6464

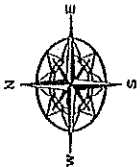
City of Chilliwack
 -Job location - Yale Rd & Alexander Ave
 -Closure description - Center Lane Closure - North Bound
 -Tentative date - TBA
 -Job description - Bore Hole Tasting

Advanced Warning Sign distances may be shortened due to Urban block length

Legend	
	Work Area
	Tubular
	Crew Working symbol C-004
	Flagger Ahead C-001-1
	Sign Stand
	flagger
	Arrowboard (Single)

PLAN 3.

www.invarion.com



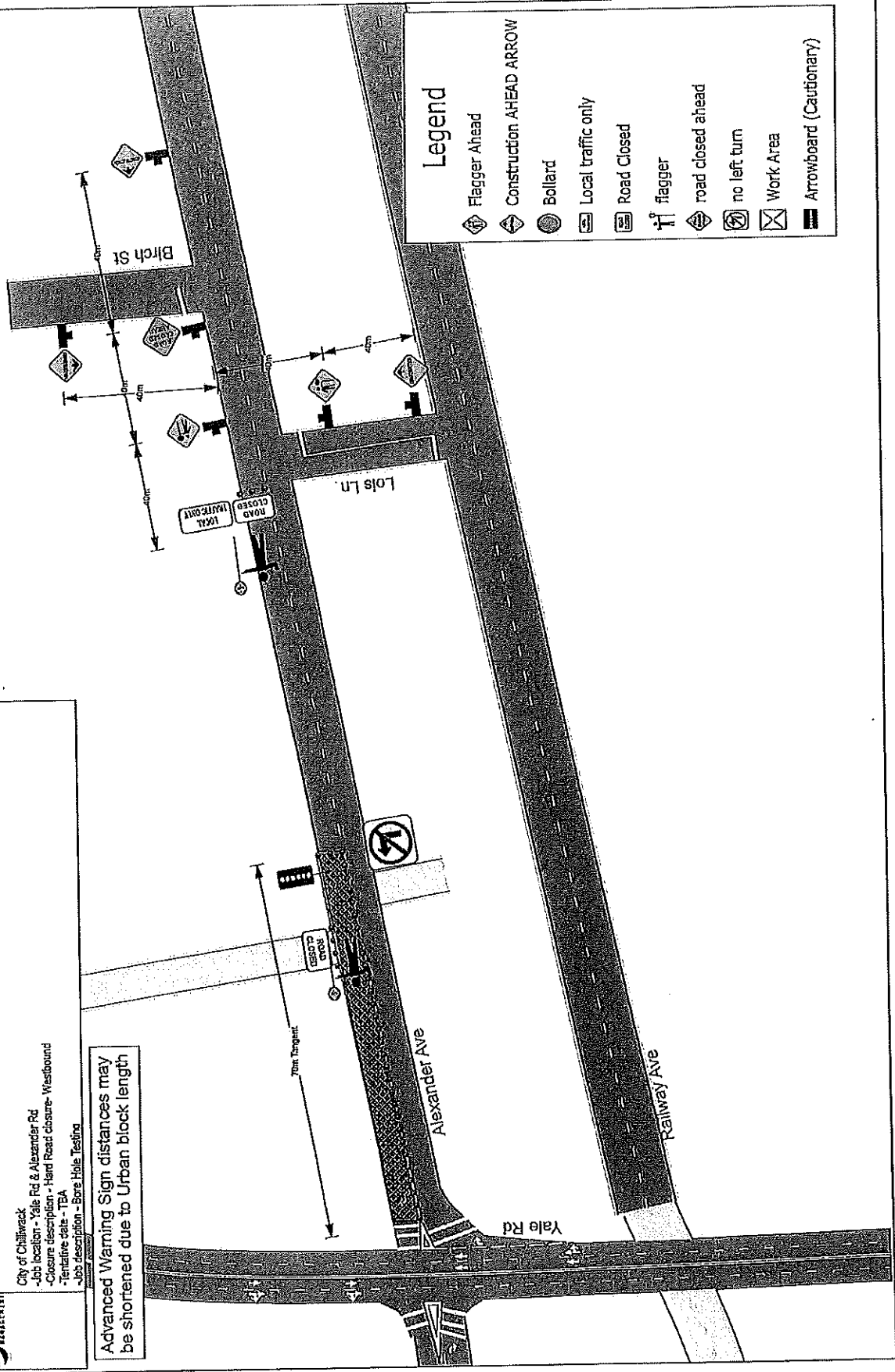
Date: May 6, 2015 Author: Nadia May - 804-395-5154 Universal Flagging - 170-8061 Longleaf Hwy Burnaby, BC V5A 1W9
 Offices: 804-444-3732 Dwg#: 001

Comments:

Goldier Associates
 Mark Newman
 804-353-6464

City of Chilliwack
 -Job location - Yale Rd & Alexander Rd
 -Closure description - Hand Road closure- Westbound
 -Tentative date - TBA
 -Job description - Bare Hole Testing

Advanced Warning Sign distances may be shortened due to Urban block length

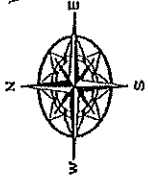


Legend

- Flagger Ahead
- Construction AHEAD ARROW
- Bollard
- Local traffic only
- Road Closed
- flagger
- road closed ahead
- no left turn
- Work Area
- Arrowboard (Cautionary)

PLAN 4

www.invarion.com



Date: May 6, 2016 Author: Natalie May - 604-396-9164 Universal Flagging: 170-8061 Loughheed Hwy Burnaby, BC V5A 1W9
 Office: 604-444-3732 Dwg: 001

Comments:

Golder Associates
 Mark Newman
 604-353-6464

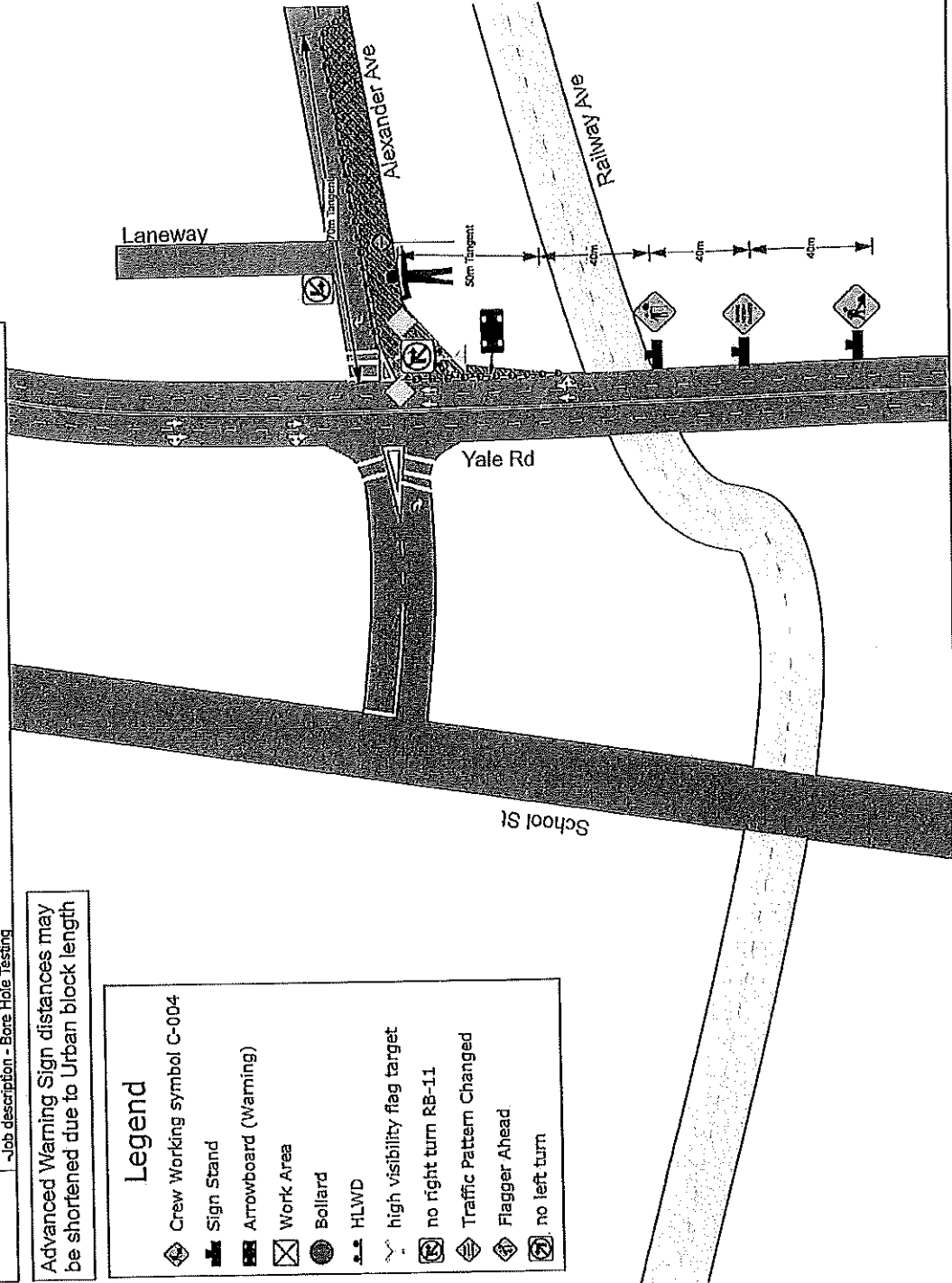
City of Chilliwack
 -Job location - Yale Rd & Alexander Rd
 -Closure description - North bound right turn lane closure
 -Intensive date - TBA
 -Job description - Bore Hole Testing



Advanced Warning Sign distances may be shortened due to Urban block length

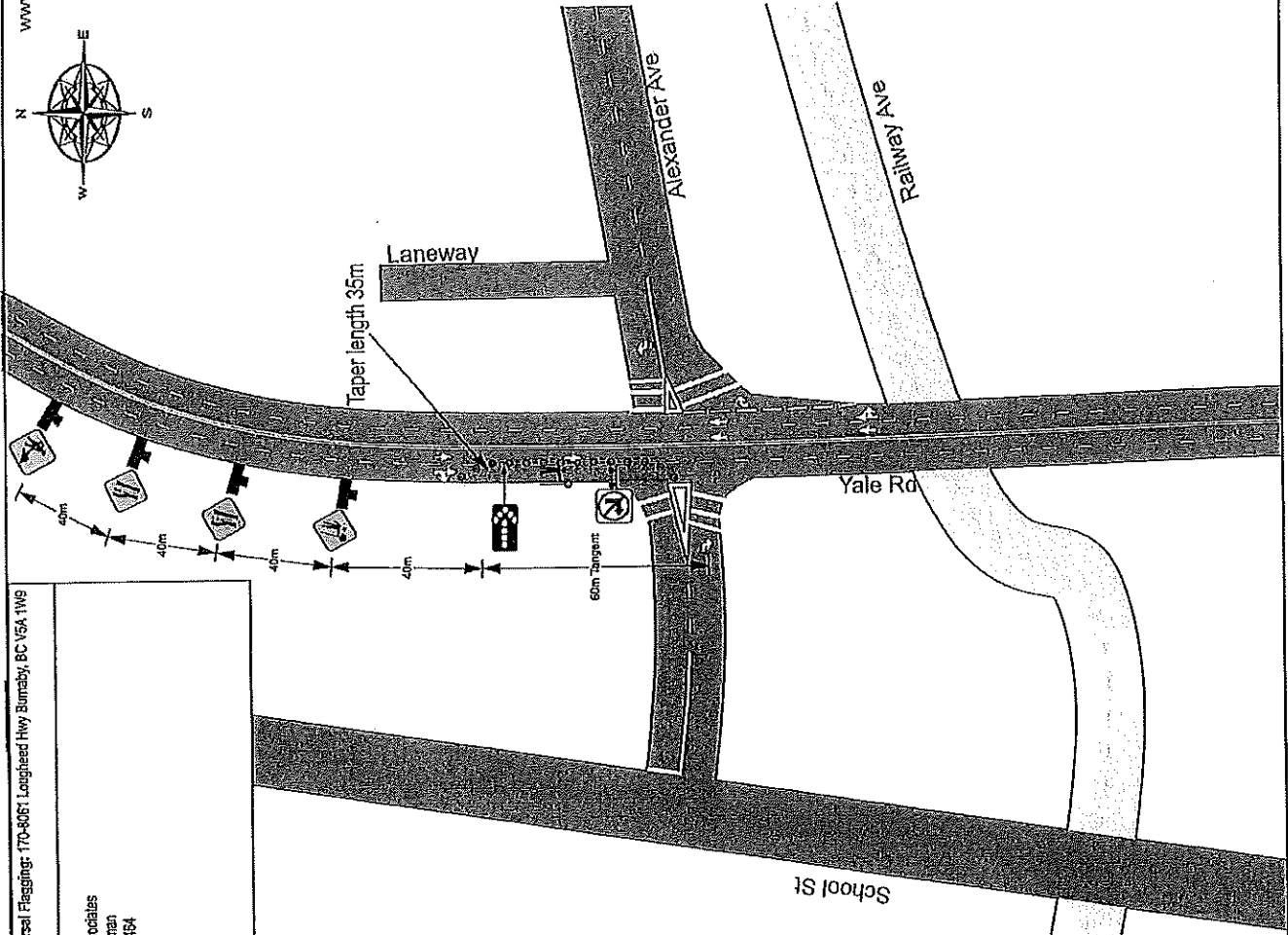
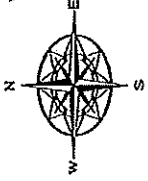
Legend

- Crew Working symbol C-004
- Sign Stand
- Arrowboard (Warning)
- Work Area
- Bollard
- HLWD
- high visibility flag target
- no right turn RB-11
- Traffic Pattern Changed
- Flagger Ahead
- no left turn



PLAN 15

www.invarion.com



Date: May 6, 2015 Author: Natalie May - 604-395-9764 Universal Flagging: 170-5061 Lougheed Hwy Burnaby, BC V5A 1W9
 Office: 604-444-3732 Dwg: 001

Comments:
 Collier Associates
 Mark Newman
 604-363-6164

City of Chilliwack
 Job location - Yale Rd & Alexander Ave
 Closure description - Curb Lane Closure - South bound
 Tentative date - TBA
 Job description - Bore Hole Testing

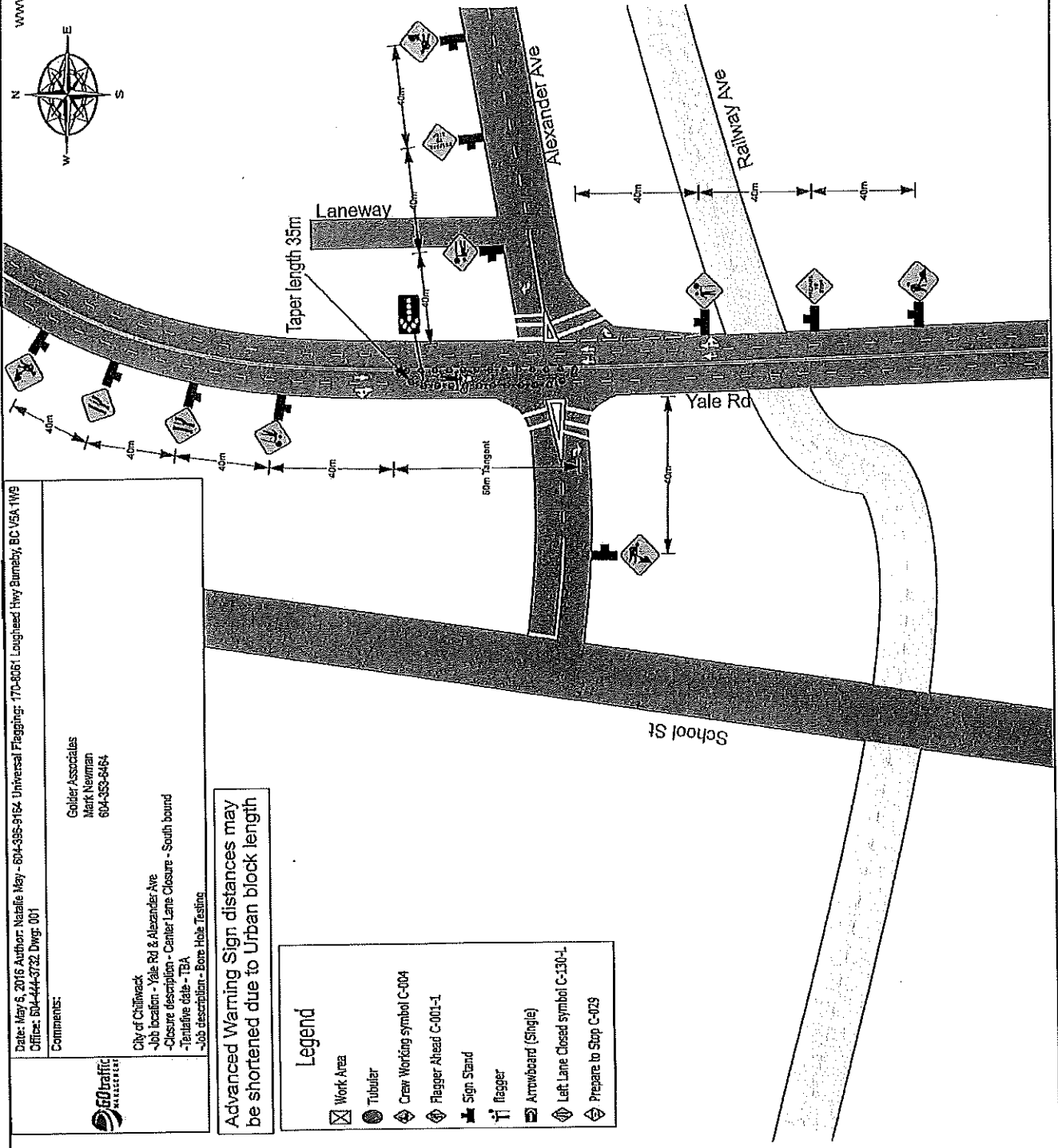
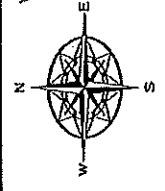
Advanced Warning Sign distances may be shortened due to Urban block length

Legend

- Work Area
- Tubular
- Sign Stand
- Flagger
- Arrowboard (Single)
- Right Lane Closed Symbol C-130-R
- Flagger Ahead C-001-1
- No right turn 8B-11

PLAN 6

www.invarion.com



Date: May 6, 2016 Author: Nadia May - 604-955-9164 Universal Flagging: 170-5061 Loughhead Hwy Burnaby, BC V5A 1W9
 Office: 604-444-3732 Dwg#: 001

Comments:

Golden Associates
 Mark Newman
 604-353-8464

City of Chilliwack
 Job location - Yale Rd & Alexander Ave
 Closure description - Center Lane Closure - South bound
 Tentative date - TBA
 Job description - Bore Hole Testing

Advanced Warning Sign distances may be shortened due to Urban block length

Legend

- Work Area
- Tubular
- Crew Working symbol C-004
- Flagger Ahead C-001-1
- Sign Stand
- flagger
- Arrowboard (Single)
- Left Lane Closed symbol C-130-1
- Prepare to Stop C-029